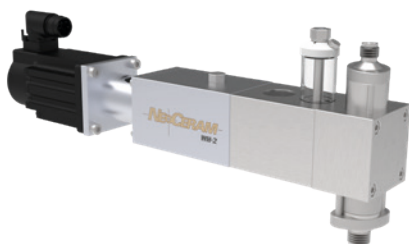
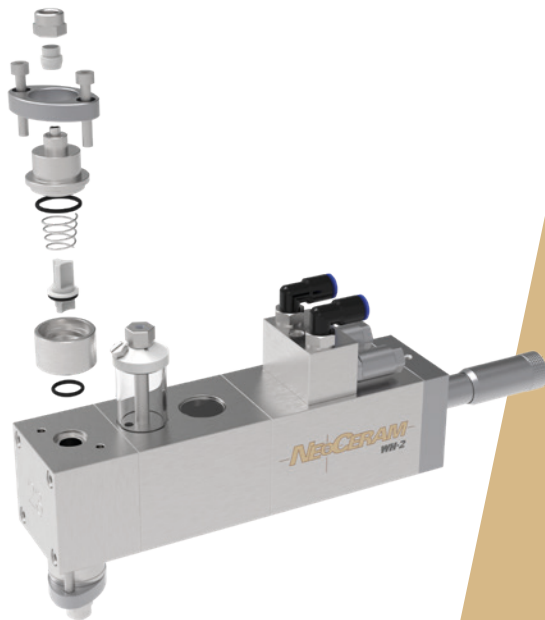


WH-2C Check valve pump



New NeocerAM WH-2 pumps, check valve version. These pumps are ideal for products with low and medium viscosity, their modular design makes these pumps easy to integrate with automated filling equipment.

- Volume up to 20 ml
- Filling accuracy of up to $\pm 0.2\%$ or better
- Pumps actuated pneumatically or by servo motor.
- Adjustment of filling volume and speed control by a precise built-in micrometer, for pneumatic pump drive type.
- Check valve technology for low viscous products up to 20,000 cps., without any solid particles. Consult us for higher viscosity applications.
- Applications: Cosmetics, food, pharmaceutical, home care and more
- Reed switch ready design for accurate position feedback



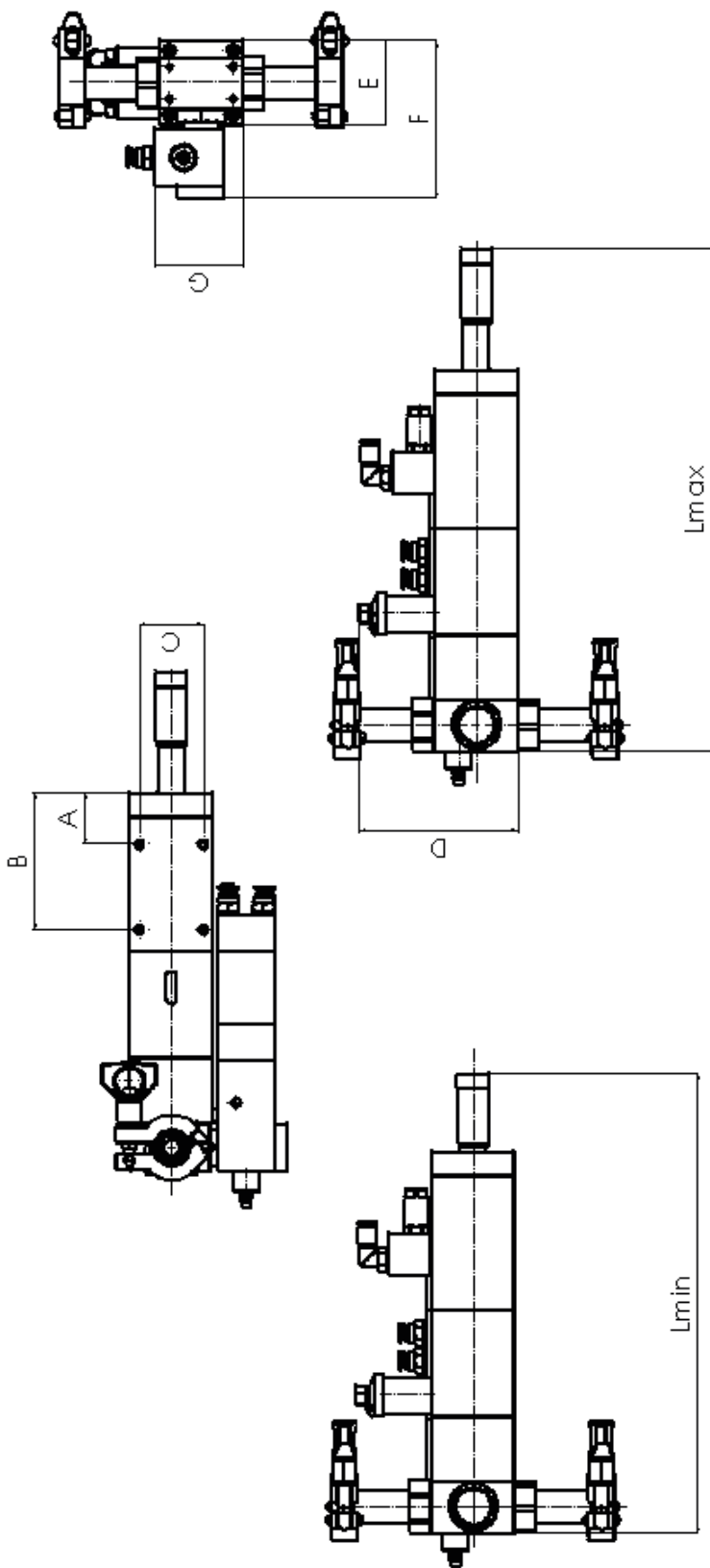
Scan to visit
www.neoceramavanti.com



BQA_QMS_C_2023162



BQA_QMS_C_1997162



Model*	Plunger diameter inches (mm)	Dispensing stroke inches (mm)	Maximum dispensing volume (ml)	Air consumption scfm (l/min)**	Maximum cycle speed cpm***	Pump dimension**** inches (mm)						
						A	B	C	D	E	L min	L max
WH-2PC20xxxx	1/2 (12.7)	0 - 1 (0 - 25.4)	3.21	0.83 (23.5)	0-150	1,969(50)	3,717 (94,4)	1,161 (29,5)	2 (50,8)	1,496 (38)	9,528 (242)	10,528 (267,4)
WH-2PC21xxxx	5/8 (15.87)	0 - 1 (0 - 25.4)	5 027	0.83 (23.5)	0-150	1,969(50)	3,717 (94,4)	1,161 (29,5)	3 (50,8)	1,496 (38)	9,528 (242)	10,528 (267,4)
WH-2PC22xxxx	3/4 (19.05)	0 - 1 (0 - 25.4)	7.24	0.83 (23.5)	0-150	1,969(50)	3,717 (94,4)	1,161 (29,5)	4 (50,8)	1,496 (38)	9,528 (242)	10,528 (267,4)
WH-2PC23xxxx	7/8 (22.22)	0 - 1 (0 - 25.4)	9 854	0.83 (23.5)	0-150	1,969(50)	3,717 (94,4)	1,161 (29,5)	5 (50,8)	1,496 (38)	9,528 (242)	10,528 (267,4)
WH-2PC24xxxx	1 - 1/16 (26.99)	0 - 1 (0 - 25.4)	14.52	0.83 (23.5)	0-150	1,969(50)	3,717 (94,4)	1,161 (29,5)	6 (50,8)	1,496 (38)	9,528 (242)	10,528 (267,4)
WH-2PC25xxxx	1 - 1/4 (31.75)	0 - 1 (0 - 25.4)	20.11	0.83 (23.5)	0-150	1,969(50)	3,717 (94,4)	1,161 (29,5)	7 (50,8)	1,496 (38)	9,528 (242)	10,528 (267,4)

* Model numbers listed are for illustrative purposes of the pneumatic version. Servo driven version also available. For full pump models, please contact a Neoceram sales representative.

** Air consumption values are indicative. These can vary depending on product characteristics and working conditions. This does not apply to servo drive type pumps.

*** Cycle speeds are indicative. These can vary depending on product characteristics and working conditions, as well as pump drive type.

**** The pump length for a servo motor will be different from the above dimensions.

North America

4525 Lehigh Drive

Walnutport, PA 18088 • USA

+1 (610) 837-9001

sales.avanti@neoceram.com

www.neoceramavanti.com



Europe

Viale dell' Agricoltura 12

15067 Novi Ligure (AL) • Italy

+39 0143 78538

sales.avanti.eu@neoceram.com